



Total Solution Provider in Saw Device

SA806AM1

LTE, Balanced RF SAW Filter
Revision 0: September 2010



- Electrical Characteristics
 - Package Dimensions
 - Testing Environment
 - Frequency Characteristics
-

SAWNICS Inc.

460 Cheonheung-ri, Seonggeo-eup, Cheonan-si, Chungcheongnam-do, 330-836 / Korea.
Tel: +82 41 550 9372 / Fax: +82 41 550 9399 / www.sawnics.com

□ Electrical Characteristics

Maximum Ratings

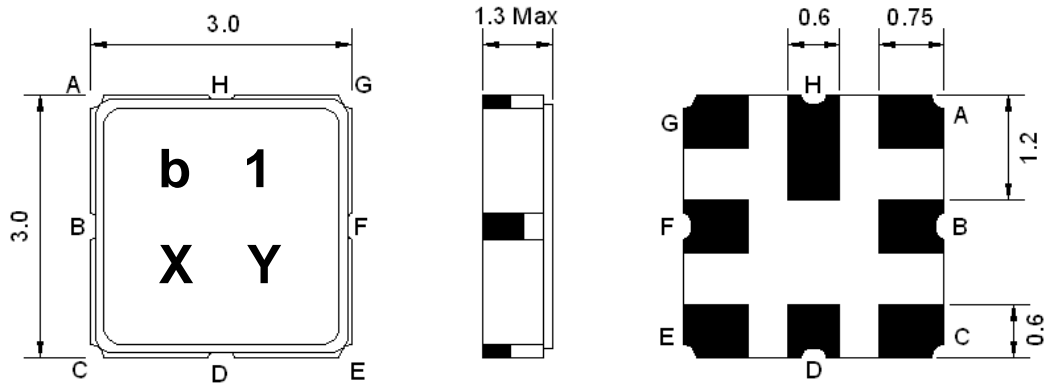
Parameters Description	Unit	Minimum	Typical	Maximum
Operating Temperature Range	°C	-30	-	+80
Storage Temperature Range	°C	-40	-	+85
Maximum DC Voltage	V	-	-	0
Maximum Input Power	dBm	-	-	10
Source Impedance (single ended) ⁽¹⁾	Ω	-	50	-
Load Impedance (balanced ended) ⁽¹⁾	Ω	-	100	-
Package type & size	M1			
Length x Width	mm ²	-	3.0 x 3.0	-
Height	mm	-	-	1.3

Electrical Specification

Parameters Description	Unit	Minimum	Typical	Maximum
Center Frequency (Fo)	MHz	-	806.0	-
Insertion Loss within 791.0 ~ 821.0 MHz	dB	-	3.0	4.5
Amplitude Ripple within 791.0 ~ 821.0 MHz	dB _{P-P}	-	1.2	2.2
Attenuation:				
D.C ~ 760.0 MHz	dB	45	55	-
832.0 ~ 862.0 MHz	dB	12	23	-
862.0 ~ 910.0 MHz	dB	35	45	-
VSWR within 791.0 ~ 821.0 MHz	-	-	2.0	2.5

Notes : (1) With Matching Network

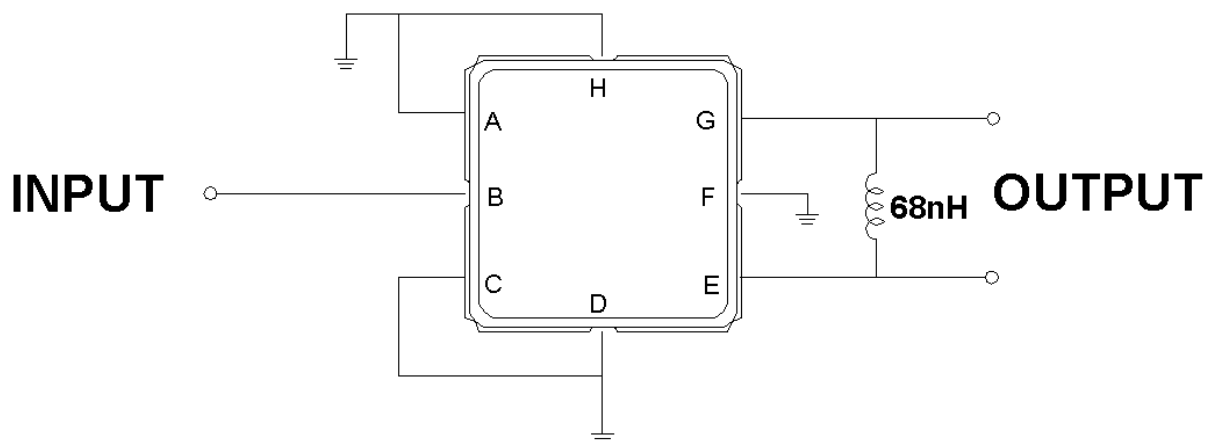
Package Dimensions



Marking Descriptions	
b	Wireless Application
1	Series Number
X	Date Code(Year)
Y	Date Code(Month)

Pin Description	
A, C, D, F, H	Ground
B	In
E, G	Out

Testing Environment

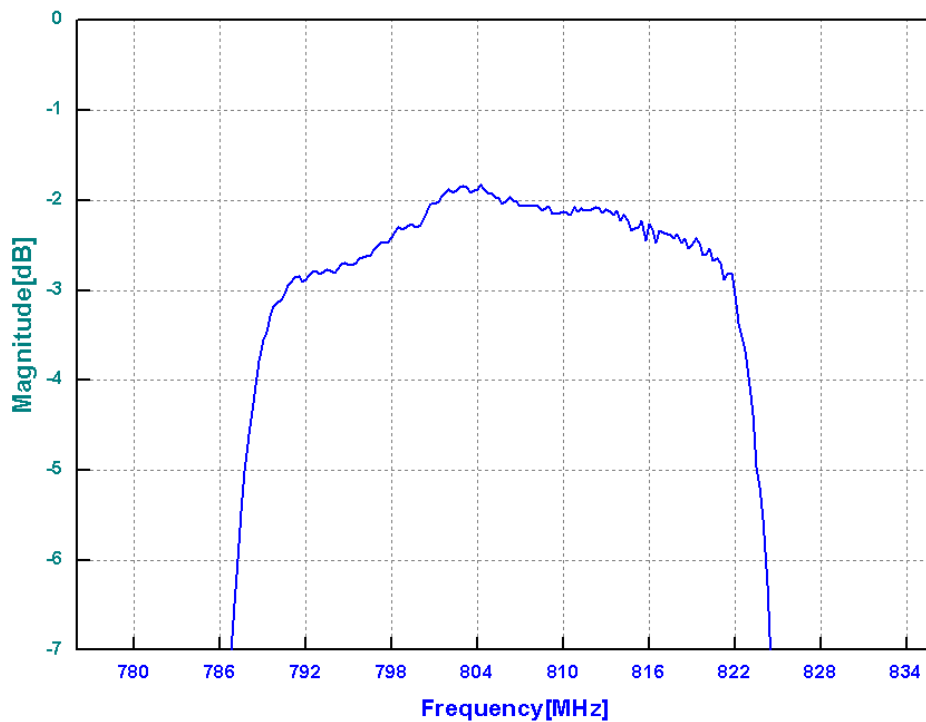
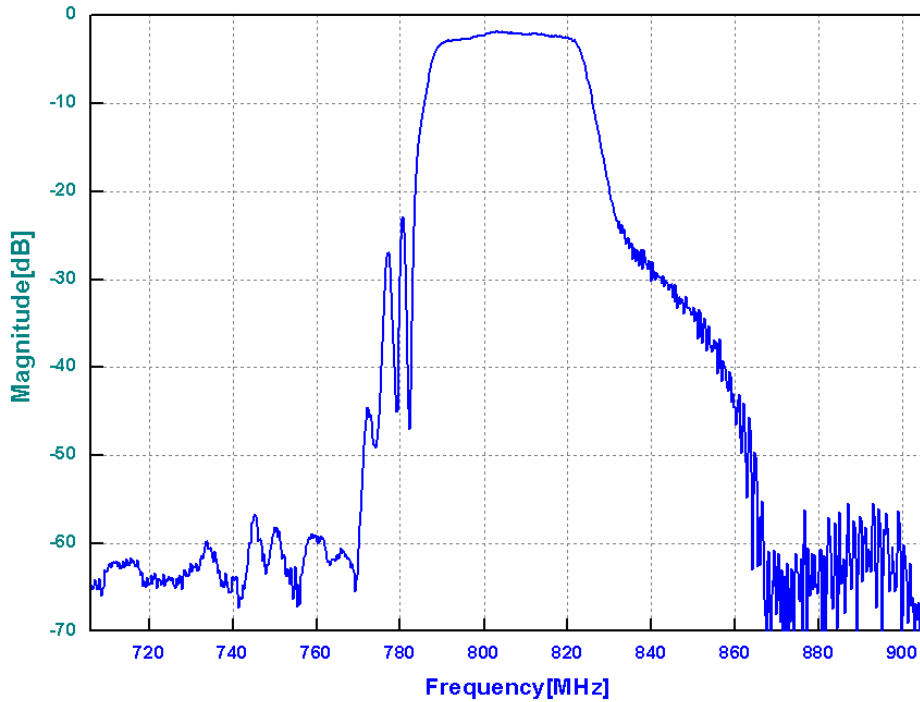


Source Impedance: 50 Ω

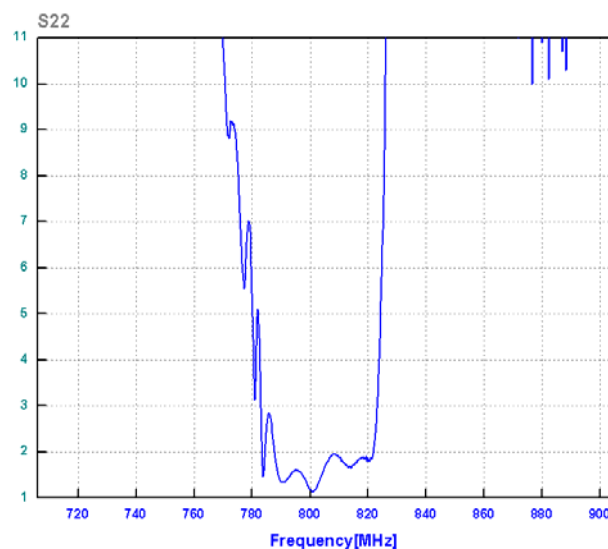
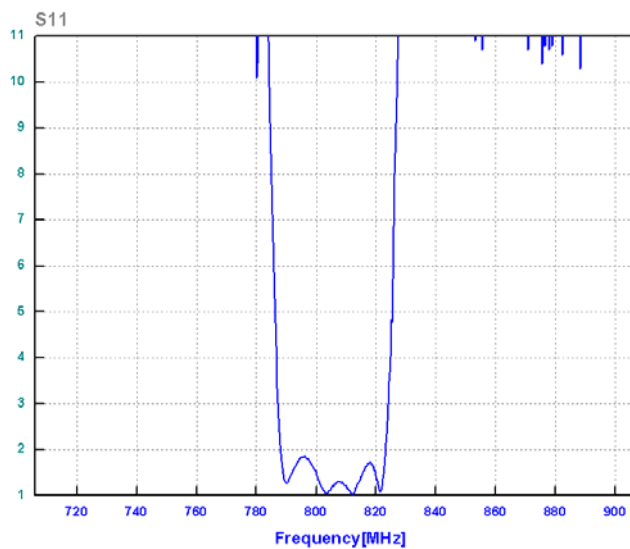
Load Impedance : 100 Ω

□ Frequency Characteristics

Frequency Response



VSWR



Smith Chart

